

Machin Head - 2nd Class - FS 14

Based on the design of Arnold Machin

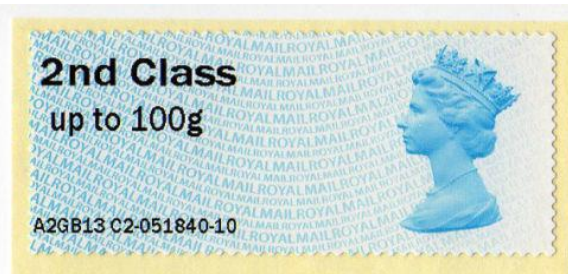
Images printed in Gravure by International Security Printers (Walsall), service indicator and datastrng printed thermally at point of sale.

Phosphor: One centre band (over the Queen's head)
Perfs: 14 x 14½ (simulated)
Underprint: (ROYAL MAIL) Blue
Stamp Size: 56mm x 25mm



Date Issued or (EKD)	Machine			Date Code	Values	Overprint	Remarks
	Type	No.	Location				
20-Feb-13	RM Ser. I	C1	Tallents House	MA12	2nd Class - Up to 100g 2nd Large - Up to 100g	None	Issued from Tallents House On First Day Cover Datastring: A2GB13 C1-051840-10
20-Feb-13	RM Ser. I	C2	Tallents House	MA12	2nd Class - Up to 100g 2nd Large - Up to 100g	None	Issued from Tallents House In Pres. Pack P&G 10 (PO Code ZS 020) Datastring: A2GB13 C2-051840-10 & 11
20-Feb-13	RM Ser. I	A2	Spring Stampex 2013	MA12	2nd Class - Up to 100g	None	Only issued at Spring Stampex 2013. 20 to 23-Feb-13. Datastring: A2GB13 A2 , A3, A4, B1 or B2
	RM Ser. I	A3	Spring Stampex 2013	MA12	2nd Large - Up to 100g		
	RM Ser. I	A4	Spring Stampex 2013	MA12			
	RM Ser. I	B1	Spring Stampex 2013	MA12			
	RM Ser. I	B2	Spring Stampex 2013	MA12			
20-Feb-13	RM Ser. I	B2	Spring Stampex 2013	MA12	2nd Large - Up to 100g	Salisbury Stamp Show 2013	Unofficial Promotion by Rush Stamps Ltd Only used examples known Datastring: A2GB13 B2
							
20-Nov-13	RM Ser. I	A3	Newcastle - North & South	MA12	2nd Class - Up to 100g	None	Christmas Pop-up Post Office Tour 2013 Newcastle North - 20-Nov-13 Newcastle South - 21-Nov-13 Datastring: ANGB13 A3 or A4
	RM Ser. I	A4	Newcastle - North & South	MA12	2nd Large - Up to 100g		
20-Nov-13	RM Ser. I	A3	Newcastle - North	MA13	2nd Class - Up to 100g	None	Christmas Pop-up Post Office Tour 2013 20-Nov-13 (Only one day) Datastring: ANGB13 A3 or A4
	RM Ser. I	A4	Newcastle - North	MA13	2nd Large - Up to 100g		
	First appearance of MA13 date code						
23-Nov-13	RM Ser. I	A3	Glasgow	MA12	2nd Class - Up to 100g	None	Christmas Pop-up Post Office Tour 2013 23-Nov-13 (Only one day) Datastring: As above
	RM Ser. I	A4	Glasgow	MA12	2nd Large - Up to 100g		
24-Nov-13	RM Ser. I	A3	Glasgow	MA13	2nd Class - Up to 100g	None	Christmas Pop-up Post Office Tour 2013 24-Nov-13 (Only one day) Datastring: As above
	RM Ser. I	A4	Glasgow	MA13	2nd Large - Up to 100g		
29-Nov-13	RM Ser. I	A3	Liverpool	MA12	2nd Class - Up to 100g	None	Christmas Pop-up Post Office Tour 2013 A3 - 29 & 30-Nov-13 (Only 2 days) A4 - 29-Nov-13 to 1-Dec-13 (All 3 days) Datastring: As above & ADGB13 A3 or A4
	RM Ser. I	A4	Liverpool	MA12	2nd Large - Up to 100g		
29-Nov-13	RM Ser. I	A3	Liverpool	MA13	2nd Class - Up to 100g	None	Christmas Pop-up Post Office Tour 2013 A3 - 29-Nov-13 & 1-Dec-13 (Only 2 days) A4 - 29-Nov-13 (Only one day) Datastring: As above & ADGB13 A3 or A4
	RM Ser. I	A4	Liverpool	MA13	2nd Large - Up to 100g		
5-Dec-13	RM Ser. I	A3	Birmingham	MA12	2nd Class - Up to 100g	None	Christmas Pop-up Post Office Tour 2013 A3 - 6-Dec-13 (Only one day) A4 - 5 & 6-Dec-13 (Both days) Datastring: ADGB13 A3 or A4
	RM Ser. I	A4	Birmingham	MA12	2nd Large - Up to 100g		
5-Dec-13	RM Ser. I	A3	Birmingham	MA13	2nd Class - Up to 100g	None	Christmas Pop-up Post Office Tour 2013 A3 - 5 & 6-Dec-13 (Both days) A4 - 6-Dec-13 (Only one day) Datastring: ADGB13 A3 or A4
	RM Ser. I	A4	Birmingham	MA13	2nd Large - Up to 100g		

Machin Head - 2nd Class - FS 14



Based on the design of Arnold Machin

Images printed in Gravure by International Security Printers (Walsall), service indicator and datastring printed thermally at point of sale.

Phosphor: One centre band (over the Queen's head)
Perfs: 14 x 14½ (simulated)
Underprint: (ROYAL MAIL) Blue
Stamp Size: 56mm x 25mm

Date Issued or (EKD)	Machine			Date Code	Values	Overprint	Remarks	Mint	FDC
	Type	No.	Location						
7-Dec-13	RM Ser. I	A4	Cardiff	MA12	2nd Class - Up to 100g	None	Christmas Pop-up Post Office Tour 2013 7 & 8-Dec-13 Datastring: ADGB13 A4		
					2nd Large - Up to 100g				
7-Dec-13	RM Ser. I	A3	Cardiff	MA13	2nd Class - Up to 100g	None	Christmas Pop-up Post Office Tour 2013 7 & 8-Dec-13 Datastring: ADGB13 A3		
					2nd Large - Up to 100g				
11-Dec-13	RM Ser. I	A4	Croydon	MA12	2nd Class - Up to 100g	None	Christmas Pop-up Post Office Tour 2013 11 & 12-Dec-13 Datastring: ADGB13 A4		
					2nd Large - Up to 100g				
11-Dec-13	RM Ser. I	A3	Croydon	MA13	2nd Class - Up to 100g	None	Christmas Pop-up Post Office Tour 2013 11 & 12-Dec-13 Datastring: ADGB13 A3		
					2nd Large - Up to 100g				
13-Dec-13	RM Ser. I	A4	Covent Garden - London	MA12	2nd Class - Up to 100g	None	Christmas Pop-up Post Office Tour 2013 A4 - 13-Dec-13 (Only one day) Datastring: ADGB13 A4		
					2nd Large - Up to 100g				
13-Dec-13	RM Ser. I	A3	Covent Garden - London	MA13	2nd Class - Up to 100g	None	Christmas Pop-up Post Office Tour 2013 A3 - 13 & 14-Dec-13 (Both days) A4 - 14-Dec-13 (Only one day) Datastring: ADGB13 A3 or A4		
	RM Ser. I	A4	Covent Garden - London	MA13	2nd Large - Up to 100g				
17-Dec-13	RM Ser. I	A3	Westfield - London	MA12	2nd Class - Up to 100g	None	Christmas Pop-up Post Office Tour 2013 A3 - 17 & 19-Dec-13 (Only 2 days) A4 - 19-Dec-13 (Only one day) Datastring: ADGB13 A3 or A4		
	RM Ser. I	A4	Westfield - London	MA12	2nd Large - Up to 100g				
17-Dec-13	RM Ser. I	A3	Westfield - London	MA13	2nd Class - Up to 100g	None	Christmas Pop-up Post Office Tour 2013 A3 - 18 & 19-Dec-13 (Only 2 days) A4 - 17 to 19-Dec-13 (All 3 days) Datastring: ADGB13 A3 or A4		
	RM Ser. I	A4	Westfield - London	MA13	2nd Large - Up to 100g				
28-Feb-14	NCR	Nationwide		MA13	2nd Class - Up to 100g	None	Issued from POs from NCR machines. First seen at Harpenden Post Office Office ID - 008033		
					2nd Large - Up to 100g				

First appearance of an NCR machine. Font Type 6

Seen with 1st Class collector strip of 6 on MA13 on 17-Oct-14 from Leeds (009323)

22-Mar-14	NCR	Nationwide		MA12	2nd Class - Up to 100g	None	Issued from POs from NCR machines. First seen at Kingsland High St. London PO Office ID - 013002		
					2nd Large - Up to 100g				

First appearance of MA12 from NCR machine

Seen with 1st Class collector strip of 6 on MA12 on 2-Oct-14 from Leeds (009323), London Bridge (006007)

20-Aug-14	RM Ser. II	A001	BPMA	MA12	2nd Class - Up to 100g	The B.P.M.A.	Only issued at the BPMA London 20-Aug-14 to 20-Oct-14 Datastring B8GB14 A001		
					2nd Large - Up to 100g	Inland Airmail 1934 + Airmail Logo			



On 16 Sept 2014 due to technical glitch 1st Class and 1st Large were printed on 2nd class blue stamps.

First appearance of RM Ser.II machine. Font Type 7

Machin Head - 2nd Class - FS 14

Based on the design of Arnold Machin

Images printed in Gravure by International Security Printers (Walsall), service indicator and datastrng printed thermally at point of sale.

Phosphor: One centre band (over the Queen's head)
Perfs: 14 x 14½ (simulated)
Underprint: (ROYAL MAIL) Blue
Stamp Size: 56mm x 25mm

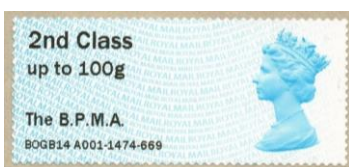


Date Issued or (EKD)	Machine			Date Code	Values	Overprint	Remarks
	Type	No.	Location				

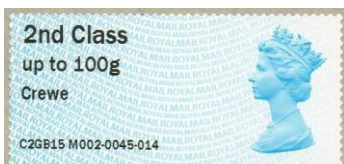
19-Sep-14	NCR		Nationwide	MA14	2nd Class - Up to 100g	None	Issued from POs from NCR machines. First seen at Edinburgh (St James) PO Office ID - 003824
					2nd Large - Up to 100g		

First appearance of MA14 date code

21-Oct-14	RM Ser.II	A001+	BPMA	MA12	2nd Class - Up to 100g	The B.P.M.A.	Only issued at the BPMA London From 21-Oct-14 to 12-Nov-14 29-Dec-14 to 17-Feb-15 8-Aug-15 to 13-Nov-15 4-Jan-16 to 29-Jan-16 Datastrng BOGB14 A001 Inscription set low
					2nd Large - Up to 100g		



9-Feb-15	RM Ser. II	M002	RM Crewe EO	MA12	2nd Class - Up to 100g	Crewe	Only issued at Crewe Enquiry Office from 9-Feb-15 to 28-Mar-15 Datastrng B2GB15 M002
					2nd Large - Up to 100g		



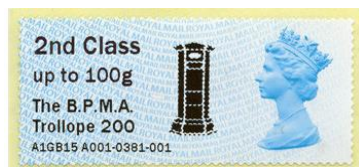
First appearance of M002

9-Feb-15	RM Ser. II	M003	RM Bradford North EO	MA12	2nd Class - Up to 100g	Bradford N	Only issued at Bradford N Enquiry Office from 9-Feb-15 to 28-Mar-15 Datastrng B2GB15 M003
					2nd Large - Up to 100g		



First appearance of M003

18-Feb-15	RM Ser. II	A001+	BPMA	MA12	2nd Class - Up to 100g	The B.P.M.A.	Only issued at the BPMA London. From 18-Feb-15 to 30-Apr-15 Datastrng B2GB15 A001.
					2nd Large - Up to 100g	Trollope 200 + Pillar Box Logo	



30-Mar-15	RM Ser. II	M002	RM Crewe EO	MA12	2nd Class - Up to 100g	None	Only issued at Crewe Enquiry Office From 30-Mar-15 to 27-May-15 New Tariff Datastrng B3GB15 M002
					2nd Large - Up to 100g		



First appearance of M002, without overprint

30-Mar-15	RM Ser. II	M003	RM Bradford North EO	MA12	2nd Class - Up to 100g	None	Only issued Bradford N. Enquiry Office From 30-Mar-15 to date New Tariff Datastrng B3GB15 M003
					2nd Large - Up to 100g		



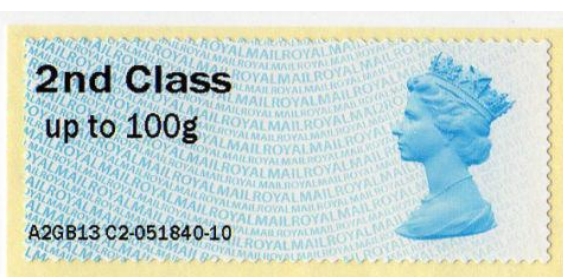
First appearance of M003, without overprint

Machin Head - 2nd Class - FS 14

Based on the design of Arnold Machin

Images printed in Gravure by International Security Printers (Walsall), service indicator and datastring printed thermally at point of sale.

Phosphor: One centre band (over the Queen's head)
Perfs: 14 x 14½ (simulated)
Underprint: (ROYAL MAIL) Blue
Stamp Size: 56mm x 25mm



Date Issued or (EKD)	Machine			Date Code	Values	Overprint	Remarks
	Type	No.	Location				

28-Apr-15	RM Ser. II	M004	RM Kingston EO	MA12	2nd Class - Up to 100g	None	Only issued at:- Kingston upon Thames - C4GB15 M004 Croydon - C4GB15 M005 Doncaster - C4GB15 M006
28-Apr-15	RM Ser. II	M005	RM Croydon EO	MA12	2nd Large - Up to 100g		
29-Apr-15	RM Ser. II	M006	RM Doncaster EO	MA12			



1-May-15	RM Ser. II	A001+	BPMA	MA12	2nd Class - Up to 100g	The B.P.M.A	Only issued at the BPMA London. From 1-May-15 to 5-May-15 Datastring B5GB15 A001
	RM Ser. II	A001+	BPMA	MA13	2nd Large - Up to 100g		

Only available for 2 actual days - 2nd & 3rd were weekend and 4th Bank Holiday
"The B.P.M.A" was set low, indented and no Full Stop at the end of B.P.M.A

6-May-15	RM Ser. II	A001+	BPMA	MA13	2nd Class - Up to 100g	The B.P.M.A. Penny Black 175 + Postmark Image	Only issued at the BPMA London. From 6-May-15 to 7-Aug-15 Datastring B5GB15 A001
					2nd Large - Up to 100g		



On 9-Jul-15 the logo error was corrected but the logo now positioned lower - base of Maltese Cross aligns with the middle of the line 'Penny Black 175'
During August the machine was re-filled with stock having MA12, but due to the logo correction mentioned above, the date code was obscured with the Maltese Cross

3-Jun-15	RM Ser II	M002	Mount Pleasant EO	MA12	2nd Class - Up to 100g	None	Only issued at Mount Pleasant EO From 3-Jun-15 to date Datastring C6GB15 M002
					2nd Large - Up to 100g		



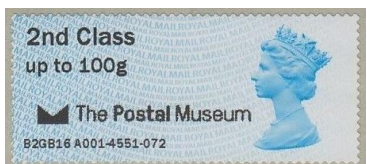
First appearance of M002 at Mount Pleasant Enquiry Office

8-Jul-15	RM Ser. II	A001+	BPMA	MA13	2nd Class - Up to 100g	The B.P.M.A. Penny Black 175 + Airmail Logo	Only issued at the BPMA London On 8 & 9-Jul-15 Datastring B7GB15 A001
					2nd Large - Up to 100g		



Wrong Logo - The fault was caused when a major software upgrade took place on the evening of Tuesday 7th July.
Approximately 30 collector strip were bought during the following 2 days, before the machine was shut down.

1-Feb-16	RM Ser. II	A001+	The Postal Museum	MA12	2nd Class - Up to 100g	The Postal Museum + Museum Logo	Only issued at The Postal Museum London From 1-Feb-16 to 16-Feb-16 Datastring: B2GB16 A001
					2nd Large - Up to 100g		



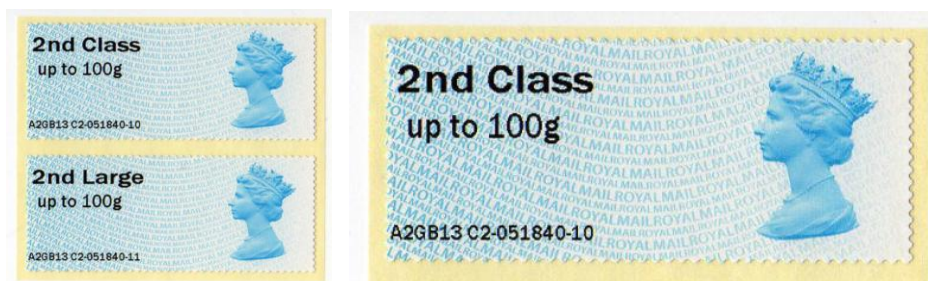
First appearance of 'The Postal Museum'

Machin Head - 2nd Class - FS 14

Based on the design of Arnold Machin

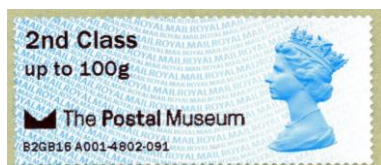
Images printed in Gravure by International Security Printers (Walsall), service indicator and datastring printed thermally at point of sale.

Phosphor: One centre band (over the Queen's head)
Perfs: 14 x 14½ (simulated)
Underprint: (ROYAL MAIL) Blue
Stamp Size: 56mm x 25mm



Date Issued or (EKD)	Machine			Date Code	Values	Overprint	Remarks
	Type	No.	Location				

17-Feb-16	RM Ser. II	A001+	The Postal Museum	MA12	2nd Class - Up to 100g	The Postal Museum + Museum Logo	Only issued at The Postal Museum London From 17-Feb-16 to Datastring: B2GB16 A001
					2nd Large - Up to 100g		



Inscription and Logo now justified left, so is not under the Queen's chin as much

Mint FDC

29-Mar-16	RM Ser. II	A001+	The Postal Museum	MA12	2nd Class - Up to 100g	The Postal Museum + Museum Logo	Only issued at The Postal Museum London On one day only - possibly for less than one hour Datastring: B3GB16 A001 Double printed ERROR
					2nd Large - Up to 100g		



"The Postal Museum" overprinted with "Logo + The Postal Museum"

Mint FDC

Mar-16	NCR	Hastings PO	MA14	2nd Class - Up to 100g	None	Only issued at Hastings PO (011925) for a short time. By error??
				2nd Large - Up to 100g		



Seen on kiosks 67 and 68 at about the same date.
Also seen from Windsor PO (008946) - Just prior to Christmas 2014 they ran out of 2nd class stock and obtained permission to use the 1st class stock for 2nd class stamps

Mint FDC

2-May-16	RM Ser. II	M001	BFPO HQ - RAF Northolt	MA12	2nd Class - Up to 100g	Image of Statue of WW1 soldier	Issued by British Forces Post Office (BFPO) HQ, RAF Northolt, Ruislip, London, HA4 6NG Datastring: C5GB16 M001
					2nd Large - Up to 100g		



FDC issued by BFPS dated 1-May-16.

Error / Prototype seen with smaller image - Only seen on session No. 0062 on 22-Apr-16

Mint FDC

11-May-16	RM Ser II	M004	Kingston-upon-Thames EO	MA15	2nd Class - Up to 100g	None	Issued from Eos with RM Ser. II machines. First seen at Kingston-upon-Thames
					2nd Large - Up to 100g		



First appearance of MA15 date code on RM Ser. II

Mint FDC

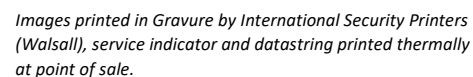
18-May-16	NCR	Nationwide	MA15	2nd Class - Up to 100g	None	Issued from POs from NCR machines. First seen at Castle Mall PO - Norwich Office ID - 019136
				2nd Large - Up to 100g		



First appearance of MA15 date code on NCR

Mint FDC

Based on the design of Arnold Machin

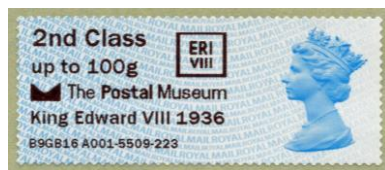


Phosphor: One centre band (over the Queen's head)
Perfs: 14 x 14½ (simulated)
Underprint: (ROYAL MAIL) Blue
Stamp Size: 56mm x 25mm

Mint FDC[illegible]

First appearance of CL16L date code and "2nd CLASS" underprint on NCR

Д	Д
---	---



1	2
---	---

[illegible][illegible]

The kiosk hadn't been reprogrammed and therefore treated them as Hibernating Animals, hence the three-line logo intended for pictorials

The receipt also says Hibernating Animals