

Royal Mail Heritage: Mail Coach - FS 27



Designer: Howard Brown
Illustration: Andrew Davidson

Images printed digitally by International Security Printers (Cartor), service indicator and datastring printed thermally at point of sale.

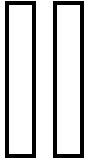
Phosphor: All over image
Perfs: 14 x 14½ (simulated)

Stamp Size: 56mm x 25mm

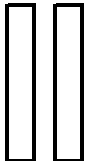
| Date Issued (or EKD) | Machine | | | Date Code | Values | Description | Remarks |
|----------------------|---------|-----|----------|-----------|--------|-------------|---------|
| | Type | No. | Location | | | | |

Mint FDC

| | | | | | | | |
|------------------------|-----------|-------|-------------------|------|------------------------|--------------------------|---|
| 01-Apr-16 | RM Ser.II | A001+ | The Postal Museum | MA16 | 1st Class - Up to 100g | The Postal Museum + Logo | Collectors Strip Only issued at the Postal Museum, London From 1-Apr-16 to 12-Jul-17 Datastring: B4GB16 A001 |
| | | | | | 1st Large - Up to 100g | | |
| | | | | | Euro 20g / World 10g | | |
| | | | | | Europe - Up to 100g | | |
| | | | | | Worldwide - Up to 20g | | |
| Worldwide - Up to 100g | | | | | | | |



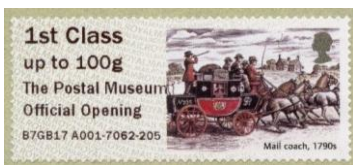
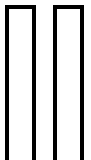
| | | | | | | | |
|------------------------|-----------|-------|-------------------|------|------------------------|--------------------------|--|
| 07-Apr-17 | RM Ser.II | A001+ | The Postal Museum | MA16 | 1st Class - Up to 100g | The Postal Museum + Logo | Only issued at the Postal Museum, London on 7-Apr-17 for a short time. Datastring: B4GB17 A001-6631 |
| | | | | | 1st Large - Up to 100g | | |
| | | | | | Euro 20g / World 10g | | |
| | | | | | Europe - Up to 100g | | |
| | | | | | Worldwide - Up to 20g | | |
| Worldwide - Up to 100g | | | | | | | |



Two major errors occurred simultaneous on 7-Apr-17 - the guillotine to cut between the stamps appears to be set at 1½ and 1½ of a stamp repeating and the printer appears to be set at 1½ stamps. Resulting in a complete stamp only every third label.

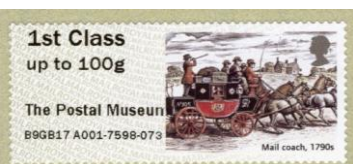
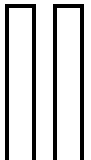
Only seen at session No 6629 - As a collector set (in 6 x 1½ stamps, all cut) and 1st class only

| | | | | | | | |
|------------------------|-----------|-------|-------------------|------|------------------------|------------------------------------|---|
| 25-Jul-17 | RM Ser.II | A001+ | The Postal Museum | MA16 | 1st Class - Up to 100g | The Postal Museum Official Opening | Collectors Strip of 6 x 1st Class Only issued at The Postal Museum London On 25-Jul-17 for one day only , and from 28-Jul-17 following the public opening, until 12-Sep-17 Datastring: B7GB17 A001 |
| | | | | | 1st Large - Up to 100g | | |
| | | | | | Euro 20g / World 10g | | |
| | | | | | Europe - Up to 100g | | |
| | | | | | Worldwide - Up to 20g | | |
| Worldwide - Up to 100g | | | | | | | |



From 10.00-17.00 on 25-Jul-17 the museum provided exclusive access to the Post & Go for one day only to give collectors an early opportunity to purchase its new 'official opening' overprint in advance of the public opening. The machine is available 7 days a week from 28-Jul-17 when the museum fully opened.

| | | | | | | | |
|------------------------|-----------|-------|-------------------|------|------------------------|-------------------|---|
| 13-Sep-17 | RM Ser.II | A001+ | The Postal Museum | MA16 | 1st Class - Up to 100g | The Postal Museum | Collectors Strip Only issued at The Postal Museum London From 13-Sep-17 to 11-Sep-18 Datastring: B9GB17 A001 Also from 30-Nov-18 to 11-Sep-18 |
| | | | | | 1st Large - Up to 100g | | |
| | | | | | Euro 20g / World 10g | | |
| | | | | | Europe - Up to 100g | | |
| | | | | | Worldwide - Up to 20g | | |
| Worldwide - Up to 100g | | | | | | | |



Royal Mail Heritage: Mail Coach - FS 27



Designer: Howard Brown
Illustration: Andrew Davidson

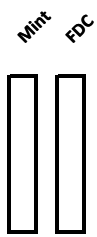
Images printed digitally by International Security Printers (Cartor), service indicator and datastring printed thermally at point of sale.

Phosphor: All over image
Perfs: 14 x 14½ (simulated)

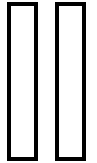
Stamp Size: 56mm x 25mm

| Date Issued (or EKD) | Machine | | | Date Code | Values | Description | Remarks |
|----------------------|---------|-----|----------|-----------|--------|-------------|---------|
| | Type | No. | Location | | | | |

| | | | | | | | |
|-----------|------------|-------|-------------------|------|--|-----------------------------|--|
| 13-Feb-19 | RM Ser. II | A001+ | The Postal Museum | MA16 | 1st Class - Up to 100g 1st Large - Up to 100g Euro 20g / World 10g Europe - Up to 100g Worldwide - Up to 20g Worldwide - Up to 100g | The Postal Museum NPM 50 | Collectors Strip Only issued at The Postal Museum London From 13-Feb-19 to 10-Oct-19 Datastring: B2GB19 A001 |
|-----------|------------|-------|-------------------|------|--|-----------------------------|--|

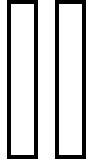
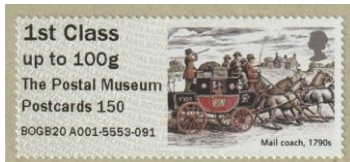


| | | | | | | | |
|-----------|------------|-------|-------------------|------|--|---------------------------------------|--|
| 11-Oct-19 | RM Ser. II | A001+ | The Postal Museum | MA16 | 1st Class - Up to 100g 1st Large - Up to 100g Euro 20g / World 10g Europe - Up to 100g Worldwide - Up to 20g Worldwide - Up to 100g | The Postal Museum New Exhibit 2019 | Collectors Strip Only issued at The Postal Museum London From 11-Oct-19 to 20-Apr-20 Datastring: BOGB19 A001 |
|-----------|------------|-------|-------------------|------|--|---------------------------------------|--|



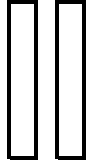
Original overprint was going to be "Crime & the Post"
Overprint was due to end on 20-Apr-20, however actually end earlier owing to COVID-19 lockdown closure on 23-Mar-20 (?)

| | | | | | | | |
|-----------|------------|-------|-------------------|------|---|------------------------------------|--|
| 29-Oct-20 | RM Ser. II | A001+ | The Postal Museum | MA16 | 1st Class - Up to 100g 1st Large - Up to 100g Euro 20g / World 10g Euro 100g / World 20g World 100g / Zone 1&3 World 100g / Zone 2 | The Postal Museum Postcards 150 | Collectors Strip Only issued at The Postal Museum London From 29-Oct-20 to Datastring: BOGB20 A001 |
|-----------|------------|-------|-------------------|------|---|------------------------------------|--|



Earliest session seen: 5500

| | | | | | | | |
|-----------|------------|-------|-------------------|------|--|------------------------------------|---|
| 20-May-21 | RM Ser. II | A001+ | The Postal Museum | MA16 | 1st Class - Up to 100g 1st Large - Up to 100g Euro 100g / World 20g World 100g Euro Large World Large | The Postal Museum Postcards 150 | Collector Strip Only issued at The Postal Museum London From 20-May-21 to Datastring: B5GB21 A001 |
|-----------|------------|-------|-------------------|------|--|------------------------------------|---|



First appearance of new overseas rates.
First Day of Issue 20-May-21 following lockdown closure.

Earliest session seen: 5780

| | | | | | | | |
|-----------|------------|-------|-------------------|------|--|-------------------|--|
| 22-Jul-21 | RM Ser. II | A001+ | The Postal Museum | MA16 | 1st Class - Up to 100g 1st Large - Up to 100g Euro 100g / World 20g World 100g Euro Large World Large | The Postal Museum | Collector Strip Only issued at The Postal Museum London From 22-Jul-21 to Datastring B7GB21 A001 |
|-----------|------------|-------|-------------------|------|--|-------------------|--|

