

Royal Mail Heritage - Underground Railway - FS 33



Design: Osborne Ross

Illustrator: Andrew Davidson

Images printed digitally by International Security Printers, service indicator and datastring printed thermally at point of sale.

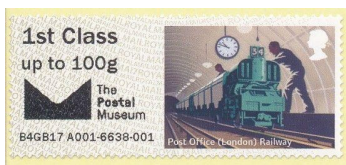
Two phosphor bands

Perfs: 14 x 14½ (simulated)

Stamp Size: 56mm x 25mm

Date Issued (or EKD)	Machine			Date Code	Values	Overprint	Remarks
	Type	No.	Location				

03-Apr-17	RM Ser. II	A001+	The Postal Museum	MA17	1st Class - Up to 100g 1st Large - Up to 100g Euro 20g / World 10g Europe - Up to 100g Worldwide - Up to 20g Worldwide - Up to 100g	The Postal Museum + Logo	Collectors Strip Only issued at the Postal Museum, London From 3-Apr-17 to 12-Jul-17 Datastring: B4GB17 A001
-----------	------------	-------	-------------------	------	--	-----------------------------	--



Issue unannounced - very scarce FDCs

Mint FDC



07-Apr-17	RM Ser. II	A001+	The Postal Museum	MA17	1st Class - Up to 100g 1st Large - Up to 100g Euro 20g / World 10g Europe - Up to 100g Worldwide - Up to 20g Worldwide - Up to 100g	The Postal Museum + Logo	Only issued at the Postal Museum, London on 7-Apr-17 for a short time. Datastring: B4GB17 A001-
-----------	------------	-------	-------------------	------	--	-----------------------------	---



Two major errors occurred simultaneously on 7-Apr-17 - the guillotine to cut between the stamps appears to be set at 1½ and 1¼ of a stamp repeating and the printer appears to be set at 1¼ stamps. Resulting in a complete stamp only every third label.

Only seen at session No 6624 - As a collector set (in 6 x 1¼ stamps, all cut)

Only seen at sessions No 6623 & 6625 - 1st Class only



25-Jul-17	RM Ser. II	A001+	The Postal Museum	MA17	1st Class - Up to 100g 1st Large - Up to 100g Euro 20g / World 10g Europe - Up to 100g Worldwide - Up to 20g Worldwide - Up to 100g	The Postal Museum Official Opening	Collectors Strip of 6 x 1st Class Only issued at The Postal Museum London On 25-Jul-17 for one day only, and from 28-Jul-17 following the public opening, until 12-Sep-17 Datastring: B7GB17 A001
-----------	------------	-------	-------------------	------	--	---------------------------------------	---



From 10.00-17.00 on 25-Jul-17 the museum provided exclusive access to the Post & Go for one day only to give collectors an early opportunity to purchase its new 'official opening' overprint in advance of the public opening. The machine is available 7 days a week from 28-Jul-17 when the museum fully opened.



Royal Mail Heritage - Underground Railway - FS 33



Design: Osborne Ross

Illustrator: Andrew Davidson

Images printed digitally by International Security Printers, service indicator and datastring printed thermally at point of sale.

Two phosphor bands

Perfs: 14 x 14½ (simulated)

Stamp Size: 56mm x 25mm

Date Issued (or EKD)	Machine			Date Code	Values	Overprint	Remarks
	Type	No.	Location				

13-Sep-17	RM Ser. II	A001+	The Postal Museum	MA17	1st Class - Up to 100g 1st Large - Up to 100g Euro 20g / World 10g Europe - Up to 100g Worldwide - Up to 20g Worldwide - Up to 100g	The Postal Museum	Collectors Strip Only issued at The Postal Museum London From 13-Sep-17 to Datastring: B9GB17 A001
-----------	------------	-------	-------------------	------	--	-------------------	--



On 23-Oct-18 a collector strip of Underground Railway was dispensed from A001+ at The Postal Museum but the receipt showed Mail Coach Collector Strip

The Postal Museum The Postal Museum 15-20 Phoenix Place London WC1X 0DA Date of issue 23/10/2018 10:56:05		
Your receipt		
Product	Qty	Price
Machin Collectors Strip	2	£8.18
Machin 2nd 2nd Class Collectors	2	£1.37
Poppy Collectors Strip	2	£8.18
Mail by Bike 1st 1st Class Strip	1	£4.02
Mail Coach Collectors Strip	1	£8.18
Total:		£47.66
5 items		
Unit : A001 - Session : 1954		
Post & Go from Royal Mail		

29-Oct-19	RM Ser. II	A005	TPM - Mail Rail	R19YAL	1st Class - Up to 100g 1st Large - Up to 100g Euro 20g / World 10g Europe - Up to 100g Worldwide - Up to 20g Worldwide - Up to 100g	Mail Rail	Collector Strip Only issued at the Mail Rail exhibition, London From 29-Oct-19 to Datastring: BOGB19 A005
-----------	------------	------	-----------------	--------	--	-----------	---



First appearance of A005 at the The Postal Museum Mail Rail

R19YAL - Sessions seen: 2038 (29-Oct-19), 2044, 2045, 2095, 2132, 2141, 2254 (18-Nov-19), 2314 (2-Dec-19)

MA17 - Sessions seen: 2042 & 2065 (29-Oct-19), 2346 (2-Dec-19),

29-Oct-20	RM Ser. II	A001+	The Postal Museum	R19YAL	1st Class - Up to 100g 1st Large - Up to 100g Euro 20g / World 10g Euro 100g / World 20g World 100g - Zone 1&3 World 100g - Zone 2	The Postal Museum	Collector Strip Only issued at The Postal Museum London From 29-Oct-20 to Datastring: BOGB20 A001
-----------	------------	-------	-------------------	--------	---	-------------------	---



Originally R19YAL dispensed, on 3-Nov-20 changed to MA18

R19YAL - Earliest session seen: 5503, 5547

MA18 - Earliest session seen: 5676

29-Oct-20	RM Ser. II	A012	TPM - Mail Rail	MA18	1st Class - Up to 100g 1st Large - Up to 100g Euro 20g / World 10g Euro 100g / World 20g World 100g - Zone 1&3 World 100g - Zone 2	Mail Rail	Collector Strip Only issued at The Postal Museum London From 29-Oct-20 to Datastring: BOGB20 A012
-----------	------------	------	-----------------	------	---	-----------	---



Kiosk A012 re-designated Mail Rail and temporarily re-located in the entrance hall of the Postal Museum

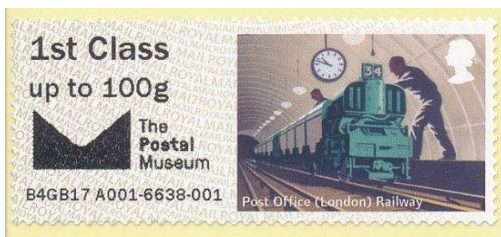
First appearance of MA18

Originally MA18 dispensed, on 1-Nov-20 changed to MA17

MA18 - Earliest session seen: 1867, 1897

MA17 - Earliest session seen: 1929, 1947

Royal Mail Heritage - Underground Railway - FS 33



Design: Osborne Ross

Illustrator: Andrew Davidson

Images printed digitally by International Security Printers, service indicator and datastring printed thermally at point of sale.

Two phosphor bands

Perfs: 14 x 14½ (simulated)

Stamp Size: 56mm x 25mm

Date Issued (or EKD)	Machine			Date Code	Values	Overprint	Remarks
	Type	No.	Location				

20-May-21	RM Ser. II	A001+	The Postal Museum	MA18	1st Class - Up to 100g	The Postal Museum	Collector Strip Only issued at The Postal Museum London From 20-May-21 to Datastring: B5GB21 A001
				R19YAL	1st Large - Up to 100g		
					Euro 100g / World 20g		
					World 100g		
					Euro Large		
					World Large		



First appearance of new overseas rates.

First Day of Issue 20-May-21 following lockdown closure.

MA18 - Earliest session seen: 5782

R19YAL - Earliest session seen: 6436

20-May-21	RM Ser. II	A012	TPM - Mail Rail	MA17	1st Class - Up to 100g	Mail Rail	Collector Strip Only issued at The Postal Museum London From 20-May-21 to Datastring B5GB21 A012 New tariff
					1st Large - Up to 100g		
					Euro 100g / World 20g		
					World 100g		
					Euro Large		
					World Large		



First appearance of new overseas rates.

First Day of Issue 20-May-21 following lockdown closure. Now installed back at Mail Rail

Earliest session seen: 1969

22-Jul-21	RM Ser. II	A013	TPM - Mail Rail	R19YAL	1st Class - Up to 100g	Mail Rail	Collector Strip Only issued at The Postal Museum London From 22-Jul-21 to Datastring B7GB21 A013
					1st Large - Up to 100g		
					Euro 100g / World 20g		
					World 100g		
					Euro Large		
					World Large		



First appearance of new kiosk A013.

Earliest session seen: 0027