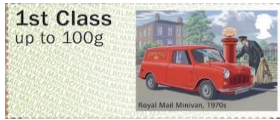
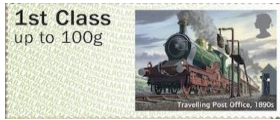
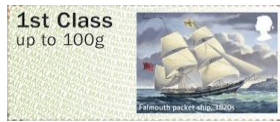
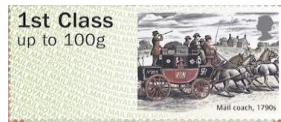
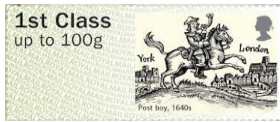


Royal Mail Heritage: Transport - FS 25



Designer: Howard Brown
Illustration: Andrew Davidson

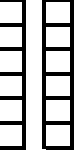
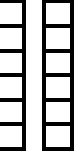
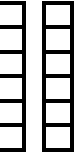
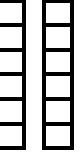
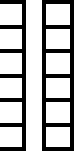
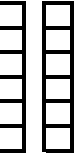
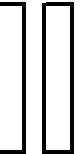
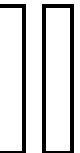
Images printed in Gravure by International Security Printers, service indicator and datastrating printed thermally at point of sale.

Two phosphor bands
Perfs: 14 x 14½ (simulated)

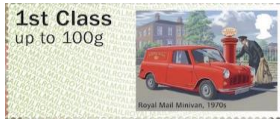
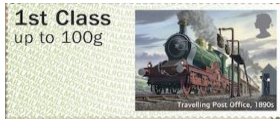
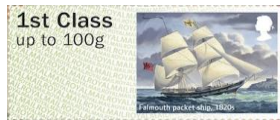
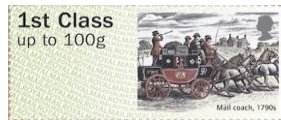
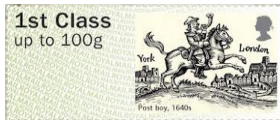
Stamp Size: 56mm x 25mm

Date Issued (or EKD)	Machine			Date Code	Values	Description	Remarks
	Type	No.	Location				
17-Feb-16	RM Ser. II	C001.	Tallents House	MA16	1st Class - Up to 100g	Post Boy - 1640s	Issued on RM FDC Datastrating: B2GB16 C001-1840-022
					1st Class - Up to 100g	Mail Coach - 1790s	
					1st Class - Up to 100g	Packet Ship - 1820s	
					1st Class - Up to 100g	Travelling PO - 1890s	
					1st Class - Up to 100g	Airmail - 1930s	
17-Feb-16	RM Ser. II	C002.	Tallents House	MA16	1st Class - Up to 100g	Post Boy - 1640s	Issued in Presentation Pack - P&G 22 PO Code ZS 042 Datastrating: B2GB16 C002-1840-022
					1st Class - Up to 100g	Mail Coach - 1790s	
					1st Class - Up to 100g	Packet Ship - 1820s	
					1st Class - Up to 100g	Travelling PO - 1890s	
					1st Class - Up to 100g	Airmail - 1930s	
17-Feb-16	NCR	Nationwide		MA16	1st Class - Up to 100g	Post Boy - 1640s	Collectors Strip Issued from POs with NCR machines
					1st Large - Up to 100g	Mail Coach - 1790s	
					Euro 20g / World 10g	Packet Ship - 1820s	
					Europe - Up to 100g	Travelling PO - 1890s	
					Worldwide - Up to 20g	Airmail - 1930s	
17-Feb-16	NCR	Nationwide		MA16	1st Class - Up to 100g	Post Boy - 1640s	Issued from POs with NCR machines
					1st Class - Up to 100g	Mail Coach - 1790s	
					1st Class - Up to 100g	Packet Ship - 1820s	
					1st Class - Up to 100g	Travelling PO - 1890s	
					1st Class - Up to 100g	Airmail - 1930s	
17-Feb-16	NCR	Nationwide		MA16	1st Large - Up to 100g	Post Boy - 1640s	Issued from POs with NCR machines
					1st Large - Up to 100g	Mail Coach - 1790s	
					1st Large - Up to 100g	Packet Ship - 1820s	
					1st Large - Up to 100g	Travelling PO - 1890s	
					1st Large - Up to 100g	Airmail - 1930s	
17-Feb-16	NCR	Nationwide		MA16	Euro 20g / World 10g	Post Boy - 1640s	Issued from POs with NCR machines
					Euro 20g / World 10g	Mail Coach - 1790s	
					Euro 20g / World 10g	Packet Ship - 1820s	
					Euro 20g / World 10g	Travelling PO - 1890s	
					Euro 20g / World 10g	Airmail - 1930s	
17-Feb-16	NCR	Nationwide		MA16	Europe - Up to 100g	Post Boy - 1640s	Issued from POs with NCR machines
					Europe - Up to 100g	Mail Coach - 1790s	
					Europe - Up to 100g	Packet Ship - 1820s	
					Europe - Up to 100g	Travelling PO - 1890s	
					Europe - Up to 100g	Airmail - 1930s	
17-Feb-16	NCR	Nationwide		MA16	Worldwide - Up to 20g	Post Boy - 1640s	Issued from POs with NCR machines
					Worldwide - Up to 20g	Mail Coach - 1790s	
					Worldwide - Up to 20g	Packet Ship - 1820s	
					Worldwide - Up to 20g	Travelling PO - 1890s	
					Worldwide - Up to 20g	Airmail - 1930s	
17-Feb-16	NCR	Nationwide		MA16	Worldwide - Up to 100g	Post Boy - 1640s	Issued from POs with NCR machines
					Worldwide - Up to 100g	Mail Coach - 1790s	
					Worldwide - Up to 100g	Packet Ship - 1820s	
					Worldwide - Up to 100g	Travelling PO - 1890s	
					Worldwide - Up to 100g	Airmail - 1930s	

Mint FDC



Royal Mail Heritage: Transport - FS 25



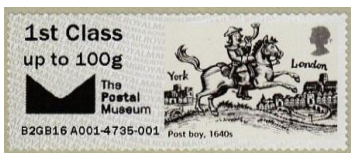
Designer: Howard Brown
Illustration: Andrew Davidson

Images printed in Gravure by International Security Printers, service indicator and datastrating printed thermally at point of sale.

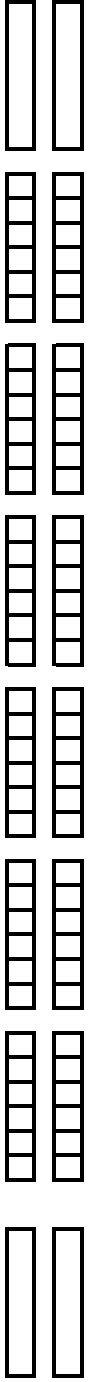
Two phosphor bands
Perfs: 14 x 14½ (simulated)

Stamp Size: 56mm x 25mm

Date Issued (or EKD)	Machine			Date Code	Values	Description	Remarks
	Type	No.	Location				
17-Feb-16	RM Ser.II	A006	Spring Stampex 2016	MA16	1st Class - Up to 100g	Post Boy - 1640s	Collectors Strip Only issued at Spring Stampex 2016 17 to 20-Feb-16. Datastrating: B2GB16 A006, A008, A009 or B001
	RM Ser.II	A008	Spring Stampex 2016	MA16	1st Large - Up to 100g	Mail Coach - 1790s	
	RM Ser.II	A009	Spring Stampex 2016	MA16	Euro 20g / World 10g	Packet Ship - 1820s	
	RM Ser.II	B001	Spring Stampex 2016	MA16	Europe - Up to 100g	Travelling PO - 1890s	
17-Feb-16	RM Ser.II	A006	Spring Stampex 2016	MA16	Worldwide - Up to 20g	Airmail - 1930s	
	RM Ser.II	A008	Spring Stampex 2016	MA16	Worldwide - Up to 100g	RM Minivan - 1970s	
	RM Ser.II	A009	Spring Stampex 2016	MA16	1st Class - Up to 100g	Post Boy - 1640s	
	RM Ser.II	B001	Spring Stampex 2016	MA16	1st Class - Up to 100g	Mail Coach - 1790s	
17-Feb-16	RM Ser.II	A006	Spring Stampex 2016	MA16	1st Class - Up to 100g	Packet Ship - 1820s	Datastrating: B2GB16 A006, A008, A009 or B001
	RM Ser.II	A008	Spring Stampex 2016	MA16	1st Class - Up to 100g	Travelling PO - 1890s	
	RM Ser.II	A009	Spring Stampex 2016	MA16	1st Class - Up to 100g	Airmail - 1930s	
	RM Ser.II	B001	Spring Stampex 2016	MA16	1st Class - Up to 100g	RM Minivan - 1970s	
17-Feb-16	RM Ser.II	A006	Spring Stampex 2016	MA16	1st Large - Up to 100g	Post Boy - 1640s	Only issued at Spring Stampex 2016 17 to 20-Feb-16. Datastrating: B2GB16 A006, A008, A009 or B001
	RM Ser.II	A008	Spring Stampex 2016	MA16	1st Large - Up to 100g	Mail Coach - 1790s	
	RM Ser.II	A009	Spring Stampex 2016	MA16	1st Large - Up to 100g	Packet Ship - 1820s	
	RM Ser.II	B001	Spring Stampex 2016	MA16	1st Large - Up to 100g	Travelling PO - 1890s	
17-Feb-16	RM Ser.II	A006	Spring Stampex 2016	MA16	1st Large - Up to 100g	Airmail - 1930s	
	RM Ser.II	A008	Spring Stampex 2016	MA16	1st Large - Up to 100g	RM Minivan - 1970s	
	RM Ser.II	A009	Spring Stampex 2016	MA16	Euro 20g / World 10g	Post Boy - 1640s	
	RM Ser.II	B001	Spring Stampex 2016	MA16	Euro 20g / World 10g	Mail Coach - 1790s	
17-Feb-16	RM Ser.II	A006	Spring Stampex 2016	MA16	Euro 20g / World 10g	Packet Ship - 1820s	Datastrating: B2GB16 A006, A008, A009 or B001
	RM Ser.II	A008	Spring Stampex 2016	MA16	Euro 20g / World 10g	Travelling PO - 1890s	
	RM Ser.II	A009	Spring Stampex 2016	MA16	Euro 20g / World 10g	Airmail - 1930s	
	RM Ser.II	B001	Spring Stampex 2016	MA16	Euro 20g / World 10g	RM Minivan - 1970s	
17-Feb-16	RM Ser.II	A006	Spring Stampex 2016	MA16	Europe - Up to 100g	Post Boy - 1640s	Only issued at Spring Stampex 2016 17 to 20-Feb-16. Datastrating: B2GB16 A006, A008, A009 or B001
	RM Ser.II	A008	Spring Stampex 2016	MA16	Europe - Up to 100g	Mail Coach - 1790s	
	RM Ser.II	A009	Spring Stampex 2016	MA16	Europe - Up to 100g	Packet Ship - 1820s	
	RM Ser.II	B001	Spring Stampex 2016	MA16	Europe - Up to 100g	Travelling PO - 1890s	
17-Feb-16	RM Ser.II	A006	Spring Stampex 2016	MA16	Europe - Up to 100g	Airmail - 1930s	
	RM Ser.II	A008	Spring Stampex 2016	MA16	Europe - Up to 100g	RM Minivan - 1970s	
	RM Ser.II	A006	Spring Stampex 2016	MA16	Worldwide - Up to 20g	Post Boy - 1640s	
	RM Ser.II	A008	Spring Stampex 2016	MA16	Worldwide - Up to 20g	Mail Coach - 1790s	
17-Feb-16	RM Ser.II	A009	Spring Stampex 2016	MA16	Worldwide - Up to 20g	Packet Ship - 1820s	Datastrating: B2GB16 A006, A008, A009 or B001
	RM Ser.II	B001	Spring Stampex 2016	MA16	Worldwide - Up to 20g	Travelling PO - 1890s	
	RM Ser.II	A006	Spring Stampex 2016	MA16	Worldwide - Up to 20g	Airmail - 1930s	
	RM Ser.II	A008	Spring Stampex 2016	MA16	Worldwide - Up to 20g	RM Minivan - 1970s	
17-Feb-16	RM Ser.II	A006	Spring Stampex 2016	MA16	Worldwide - Up to 100g	Post Boy - 1640s	Only issued at Spring Stampex 2016 17 to 20-Feb-16. Datastrating: B2GB16 A006, A008, A009 or B001
	RM Ser.II	A008	Spring Stampex 2016	MA16	Worldwide - Up to 100g	Mail Coach - 1790s	
	RM Ser.II	A009	Spring Stampex 2016	MA16	Worldwide - Up to 100g	Packet Ship - 1820s	
	RM Ser.II	B001	Spring Stampex 2016	MA16	Worldwide - Up to 100g	Travelling PO - 1890s	
17-Feb-16	RM Ser.II	A006	Spring Stampex 2016	MA16	Worldwide - Up to 100g	Airmail - 1930s	
	RM Ser.II	A008	Spring Stampex 2016	MA16	Worldwide - Up to 100g	RM Minivan - 1970s	
	RM Ser.II	A006	Spring Stampex 2016	MA16	1st Class - Up to 100g	Post Boy - 1640s	
	RM Ser.II	A008	Spring Stampex 2016	MA16	1st Class - Up to 100g	Mail Coach - 1790s	
17-Feb-16	RM Ser.II	A009	Spring Stampex 2016	MA16	1st Class - Up to 100g	Packet Ship - 1820s	Only issued at the Postal Museum, London From 17-Feb-16 to 31-Mar-16 Overprint: The Postal Museum + Logo Datastrating: B2GB16 A001
	RM Ser.II	B001	Spring Stampex 2016	MA16	1st Class - Up to 100g	Travelling PO - 1890s	
	RM Ser.II	A006	Spring Stampex 2016	MA16	1st Class - Up to 100g	Airmail - 1930s	
	RM Ser.II	A008	Spring Stampex 2016	MA16	1st Class - Up to 100g	RM Minivan - 1970s	



Mint FDC



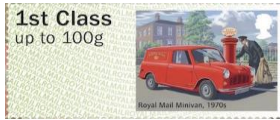
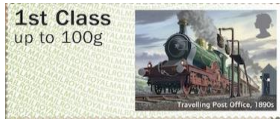
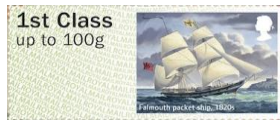
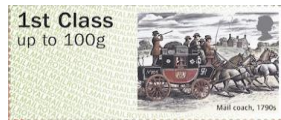
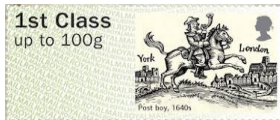
Royal Mail Heritage: Transport - FS 25

Designer: Howard Brown
Illustration: Andrew Davidson

Images printed in Gravure by International Security Printers,
service indicator and datastrating printed thermally at point of
sale.

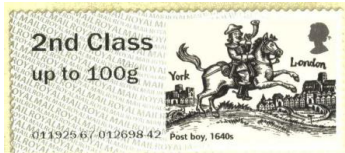
Two phosphor bands
Perfs: 14 x 14½ (simulated)

Stamp Size: 56mm x 25mm



Date Issued (or EKD)	Machine			Date Code	Values	Description	Remarks
	Type	No.	Location				

24-Feb-16	NCR		Hastings Post Office	MA16	2nd Class - Up to 100g	Post Boy - 1640s Mail Coach - 1790s Packet Ship - 1820s Travelling PO - 1890s Airmail - 1930s RM Minivan - 1970s	Only issued at Hastings PO (011925) for a short time. By error??
-----------	-----	--	----------------------	------	------------------------	---	--



2nd Large - Up to 100g	Post Boy - 1640s Mail Coach - 1790s Packet Ship - 1820s Travelling PO - 1890s Airmail - 1930s RM Minivan - 1970s	Only issued at Hastings PO (011925) for a short time. By error??
------------------------	---	--

29-Mar-16	RM Ser.II	A001+	The Postal Museum	MA16	1st Class - Up to 100g 1st Class - Up to 100g 1st Class - Up to 100g 1st Class - Up to 100g 1st Class - Up to 100g	Post Boy - 1640s Mail Coach - 1790s Packet Ship - 1820s Travelling PO - 1890s Airmail - 1930s RM Minivan - 1970s	Collectors Strip Only issued at The Postal Museum London On one day only - possibly for less than one hour Overprint: The Postal Museum + Logo Datastrating: B3GB16 A001 Double printed ERROR
-----------	-----------	-------	-------------------	------	--	---	---



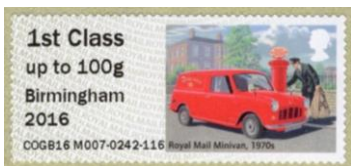
"The Postal Museum" overprinted with "Logo + The Postal Museum"

25-Sep-16	RM Ser. II	M007	ACC - Liverpool	MA16	1st Class - Up to 100g 1st Class - Up to 100g 1st Class - Up to 100g 1st Class - Up to 100g 1st Class - Up to 100g	Post Boy - 1640s Mail Coach - 1790s Packet Ship - 1820s Travelling PO - 1890s Airmail - 1930s RM Minivan - 1970s	1st Class Strip Only issued at the Labour Party Conference held at the Arena and Convention Centre - Liverpool From 25-Sep-16 to 28-Sep-16 Overprint: Liverpool 2016 Datastrating: C9GB16 M007
-----------	------------	------	-----------------	------	--	---	---



Only 1st Class strips were available.

2-Oct-16	RM Ser. II	M007	ICC - Birmingham	MA16	1st Class - Up to 100g 1st Class - Up to 100g 1st Class - Up to 100g 1st Class - Up to 100g 1st Class - Up to 100g	Post Boy - 1640s Mail Coach - 1790s Packet Ship - 1820s Travelling PO - 1890s Airmail - 1930s RM Minivan - 1970s	1st Class Strip Only issued at the Conservative Party Conference held at the International Convention Centre - Birmingham From 2-Oct-16 to 5-Oct-16 Overprint: Birmingham 2016 Datastrating: COGB16 M007
----------	------------	------	------------------	------	--	---	---



Only 1st Class strips were available.

14-Oct-16	RM Ser. II	M007	SECC - Glasgow	MA16	1st Class - Up to 100g 1st Class - Up to 100g 1st Class - Up to 100g 1st Class - Up to 100g 1st Class - Up to 100g	Post Boy - 1640s Mail Coach - 1790s Packet Ship - 1820s Travelling PO - 1890s Airmail - 1930s RM Minivan - 1970s	1st Class Strip Only issued at the SNP Party Conference held at the Scottish Exhibition & Conference Centre - Glasgow From 14-Oct-16 to 15-Oct-16 Overprint: Glasgow 2016 Datastrating: COGB16 M007
-----------	------------	------	----------------	------	--	---	--



Only 1st Class strips were available.

Although the SNP Conference was 13-Oct-16 to 15-Oct-16, it appears that stamps were only available from 14-Oct-16

Mint FDC

