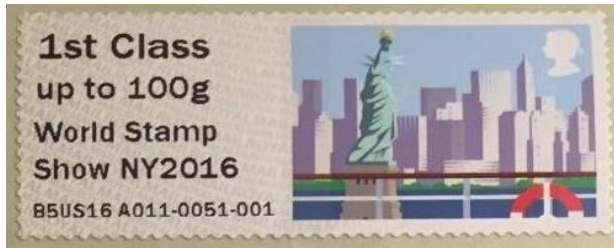


New York - FS 28



Designer: Osborne Ross  
Illustration: Andy Tuohy

Images printed in Gravure by International Security Printers, service indicator and datastring printed thermally at point of sale.

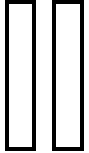
Two phosphor bands  
Perfs: 14 x 14½ (simulated)

Stamp Size: 56mm x 25mm

Date Issued (or EKD)	Machine			Date Code	Values	Description	Remarks
	Type	No.	Location				
28-May-16	RM Ser.II	A011	New York -USA	MA15	1st Class - Up to 100g	Statue of Liberty	<b>Collector Strip</b> Only issued at World Stamp Show - New York - USA 28-May-16 to 4-Jun-16 Overprint : World Stamp Show NY2016 Datastring: B5US16 A011 or A012
	RM Ser.II	A012	New York -USA	MA15	1st Large - Up to 100g	Statue of Liberty	
					Euro 20g / World 10g	Statue of Liberty	
					Europe - Up to 100g	Statue of Liberty	
					Worldwide - Up to 20g	Statue of Liberty	



Mint FDC



28-May-16	RM Ser. II	B001	Tallents House	MA15	1st Class - Up to 100g	Statue of Liberty	<b>Collector Strip</b> Issued by Tallents House to coincide with World Stamp Show - New York 28-May-16 to 4-Jun-16 Overprint : World Stamp Show NY2016 Datastring: B5GB16 B001
					1st Large - Up to 100g	Statue of Liberty	
					Euro 20g / World 10g	Statue of Liberty	
					Europe - Up to 100g	Statue of Liberty	
					Worldwide - Up to 20g	Statue of Liberty	

